

I Size 28mm High Torque Hybrid Stepping Motor

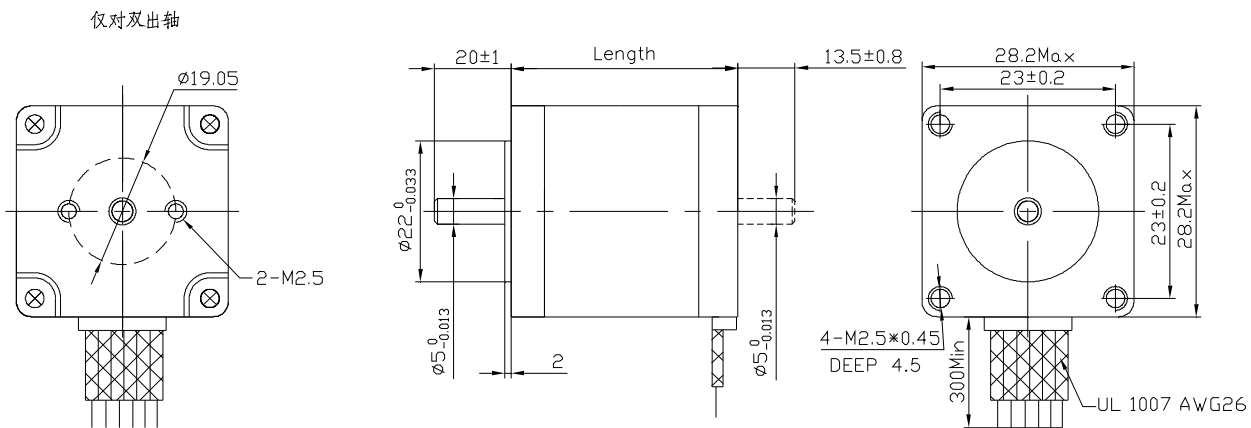


项目	性能
步距角	1.8°
步距角精度	±5% (整步,空载)
电阻公差	±10%
电感公差	±20%
温升	80° C Max.(两相通电)
工作环境温度	-20° C~+50° C
绝缘电阻	100MΩ Min. ,500VDC
介电强度	500VAC, 一分钟
径向跳动	0.02Max. (450 g-负载)
轴向间隙	0.08Max. (450 g-负载)
最大径向力	28N
最大轴向力	10N

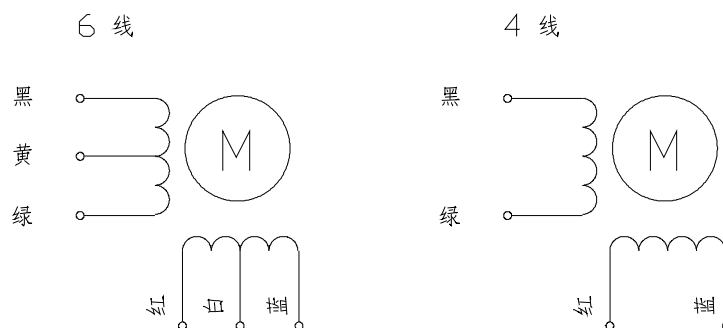
I 28mm 大力矩混合式步进电机性能

		额定电压	每相电流	每相电阻	每相电感	保持转矩	引出线数	转动惯量	重量	长度
单轴	双轴	V	A	Ω	mH	g. cm		kg-m ²	kg	mm
BL28STH32-0956A	BL28STH32-0956B	2.66	0.95	2.8	0.8	430	6	9x10 ⁻⁷	0.11	31.5
BL28STH32-0674A	BL28STH32-0674B	3.8	0.67	5.6	3.4	600	4			
BL28STH45-0956A	BL28STH45-0956B	3.4	0.95	3.4	1.2	750	6	12x10 ⁻⁷	0.14	44.5
BL28STH45-0674A	BL28STH45-0674B	4.56	0.67	6.8	4.9	950	4			
BL28STH51-0956A	BL28STH51-0956B	4.4	0.95	4.6	1.8	900	6	18x10 ⁻⁷	0.2	50.5
BL28STH51-0674A	BL28STH51-0674B	6.2	0.67	9.2	7.2	1200	4			

I 外形图



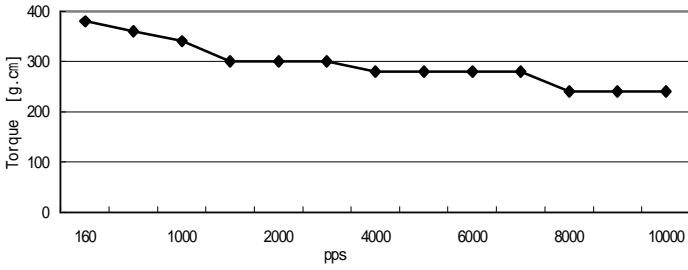
● 接线图



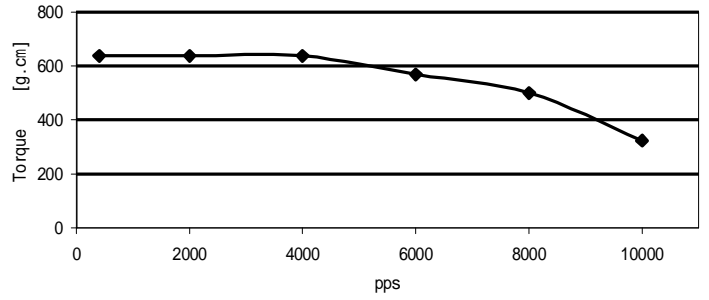
I 矩频曲线

A5

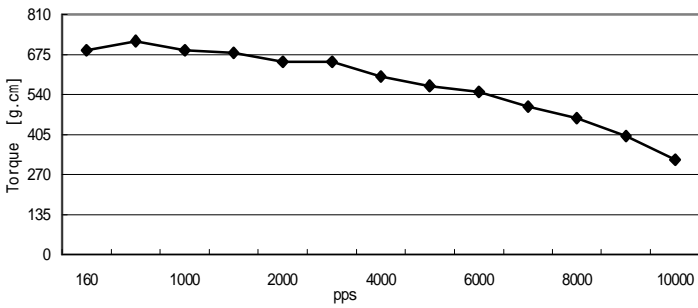
BL28STH32-0956A
VM: 24VDC; 0.95A/相 驱动器: M415B, 半步



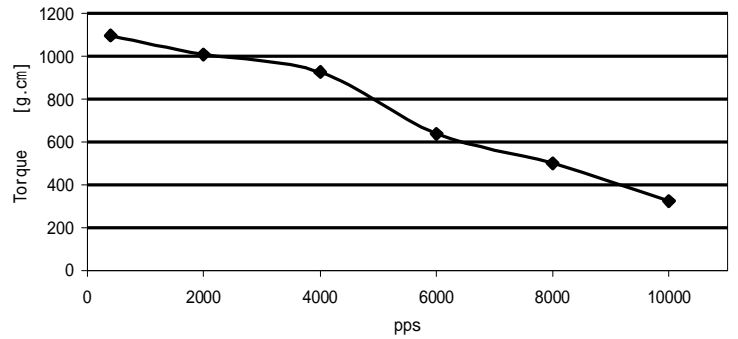
BL28STH32-0674A
VM: 24VDC; 0.74A /相 驱动器: M415B, 半步



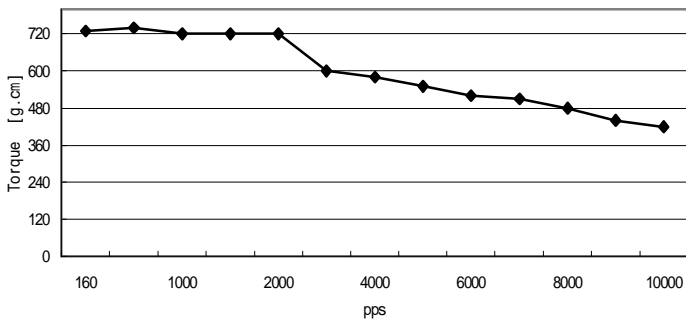
BL28STH45-0956A
VM: 24VDC; 0.95A/相 驱动器: M415B, 半步



BL28STH45-0674A
VM: 24VDC; 0.74A /相 () 驱动器: M415B, 半步



BL28STH51-0956A
VM: 24V; 0.95A/相, 驱动器: M415B, 半步



BL28STH51-0674A
VM: 24V; 0.74A /相 驱动器: M415B, 半步

